



---

# THE WHITE HOUSE

CULCHETH

---







## WELCOME HOME

Welcome to the enchanting world of The White House, a remarkable period home that seamlessly blends history, charm, and modern comfort. With a rich and storied past, this captivating residence offers a unique glimpse into the bygone era, inviting you to embark on a journey through time.

Step into a world where boldness meets charm, where colours dance and character exudes from every nook and cranny. Welcome to a home that embraces its endearing and cheeky nature, enveloping you in a vibrant tapestry of delights.

This home is a testament to the love and care bestowed upon it, as each restoration project has breathed new life into its very essence. Every room resonates with the echoes of the past, yet presents a fresh canvas upon which future memories can be painted.



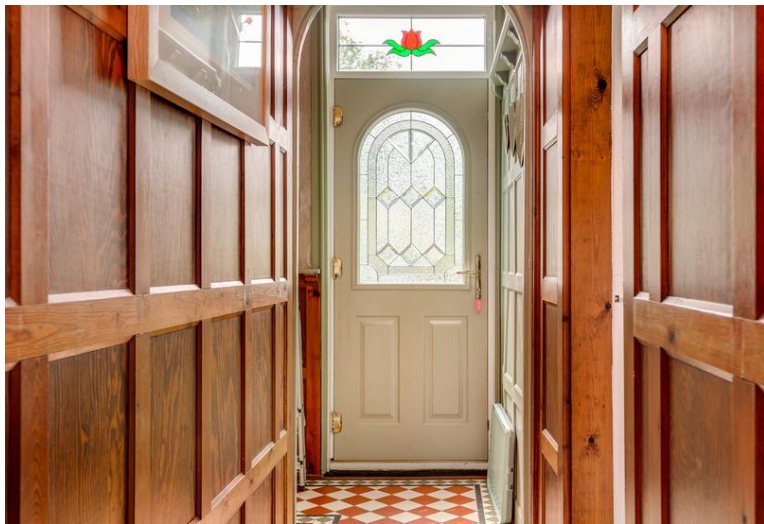










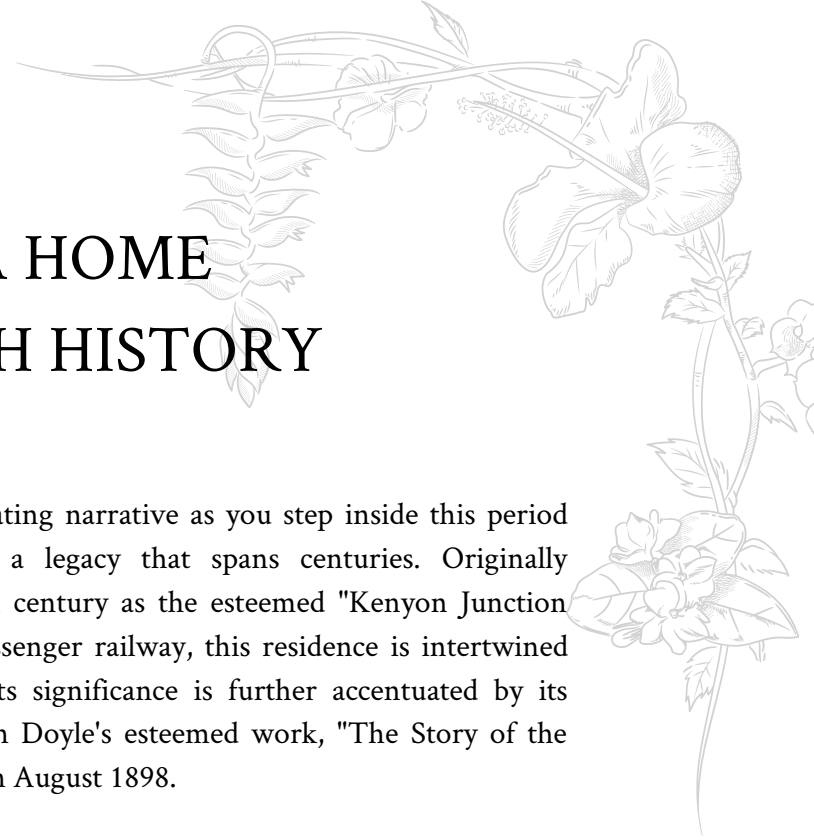


## A HOME WITH HISTORY

Immerse yourself in a captivating narrative as you step inside this period detached home, steeped in a legacy that spans centuries. Originally constructed in the early 19th century as the esteemed "Kenyon Junction Hotel" for the pioneering passenger railway, this residence is intertwined with the fabric of history. Its significance is further accentuated by its mention in Sir Arthur Conan Doyle's esteemed work, "The Story of the Lost Special," first published in August 1898.

Over the years, this property has experienced various chapters of its existence, evolving from a distinguished hotel to a beloved public house, a cherished farmhouse, and now a cherished family home. Each era has left its mark, contributing to the rich tapestry of character and charm that permeates every corner of this enchanting home.

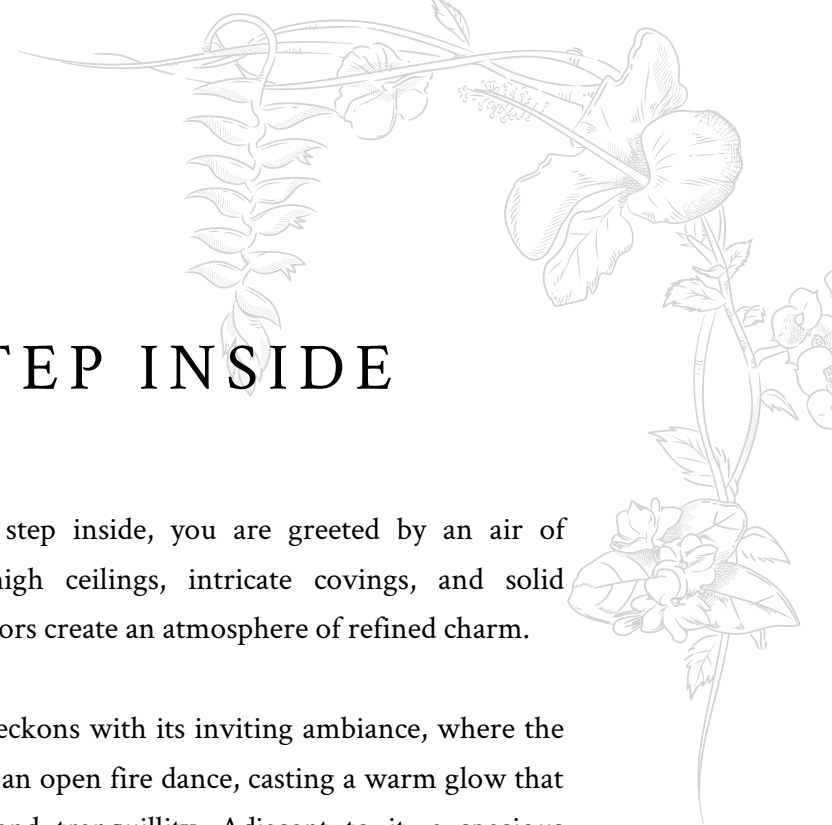
Since 2008, the current owners have lovingly embraced the responsibility of custodianship, dedicating themselves to the restoration and preservation of this cherished property. Their careful efforts have allowed the original features to shine, seamlessly integrating with modern comforts to create a living space that epitomises the perfect blend of history and contemporary convenience.











## STEP INSIDE

The moment you step inside, you are greeted by an air of elegance, where high ceilings, intricate covings, and solid original wooden floors create an atmosphere of refined charm.

The sitting room beckons with its inviting ambiance, where the flickering flames of an open fire dance, casting a warm glow that invites relaxation and tranquillity. Adjacent to it, a spacious lounge/dining room awaits, providing the perfect setting for entertaining guests or creating cherished memories with loved ones.

Envision the scene of a family gathered around the dining table, eagerly awaiting a scrumptious roast dinner. Laughter fills the air as loved ones share stories and create lasting memories. It's moments like these that epitomise the essence of this vibrant dwelling—a space that beckons you to embrace the warmth of togetherness and the joy of everyday pleasures.













# KITCHEN CLASSIC

Prepare to be captivated by the heart of the home - a recently fitted kitchen that exudes both style and functionality. Sage green cupboards and gleaming quartz worktops form a stunning backdrop for culinary creations to unfold. The kitchen is a testament to both form and function, boasting a dual fuel Rangemaster cooker and an integrated dishwasher. This bespoke masterpiece, artfully crafted by Cheshire Kitchens & Bathrooms, elevates the culinary experience to new heights.

Convenience meets practicality in the utility room, where the boiler, meticulously serviced to ensure optimal performance, finds its home. Equipped with plumbing for a washing machine, this space effortlessly combines utility with functionality, offering seamless integration into the rhythm of everyday life.















## ONWARDS AND UPWARDS

As you make your way back to the entrance hall, curiosity stirs, urging you to ascend the stairs to the first-floor landing, where a world of discovery awaits.

The expansive landing space, adorned with high ceilings and a generously proportioned window, amplifies the historical allure of the property. Yet, an elegant twist of modernity is revealed in the form of a recently designed and fitted oak and glass balustrade by the esteemed Abbott & Wade, seamlessly blending tradition with contemporary aesthetics.

Venture further into the first floor, where a haven of tranquility awaits. Five double bedrooms beckon, each promising restful nights and a sanctuary of privacy. The second bedroom boasts the added luxury of an en-suite shower room, effortlessly combining convenience with comfort.















## BATHE IN BLISS

The main bathroom, professionally fitted to an exceptional standard within the last three years, elevates daily routines to indulgent experiences.

Continuing the character and charm of the rest of the home, the bathroom enjoys a practical, yet luxurious layout, which enjoys the tasteful decor of subtle, fresh tones and carefully considered plants - this bathroom is sure to have you feeling refreshed and ready for the day.

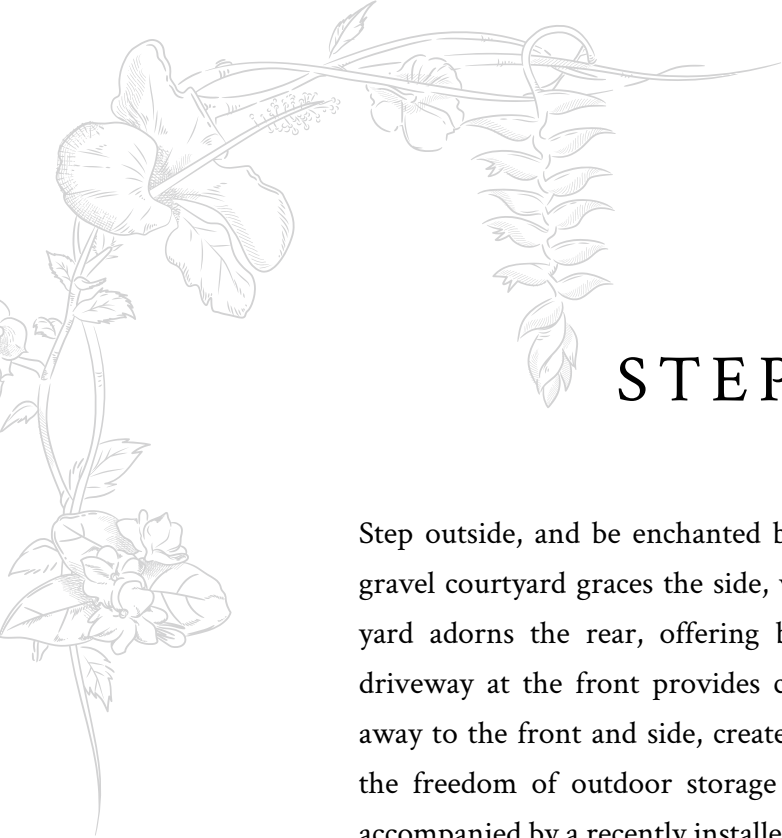
Manifest taking a morning spritz beneath the rainfall shower, or sinking into the bathtub for an evening soak whilst watching the sunset through the window.











## STEP OUTSIDE

Step outside, and be enchanted by the external spaces that surround the home. A gravel courtyard graces the side, while a newly installed resin bound stone covered yard adorns the rear, offering both functionality and visual appeal. A separate driveway at the front provides convenient access, while a hidden garden, tucked away to the front and side, creates a private oasis shielded from prying eyes. Enjoy the freedom of outdoor storage with a single garage facing onto the courtyard, accompanied by a recently installed low maintenance Keter Oakland shed, measuring an impressive 11ft x 5ft. Both structures are fully equipped with internal electric use, boasting separate waterproof electrical outlets and illuminating the garden with a gentle glow.

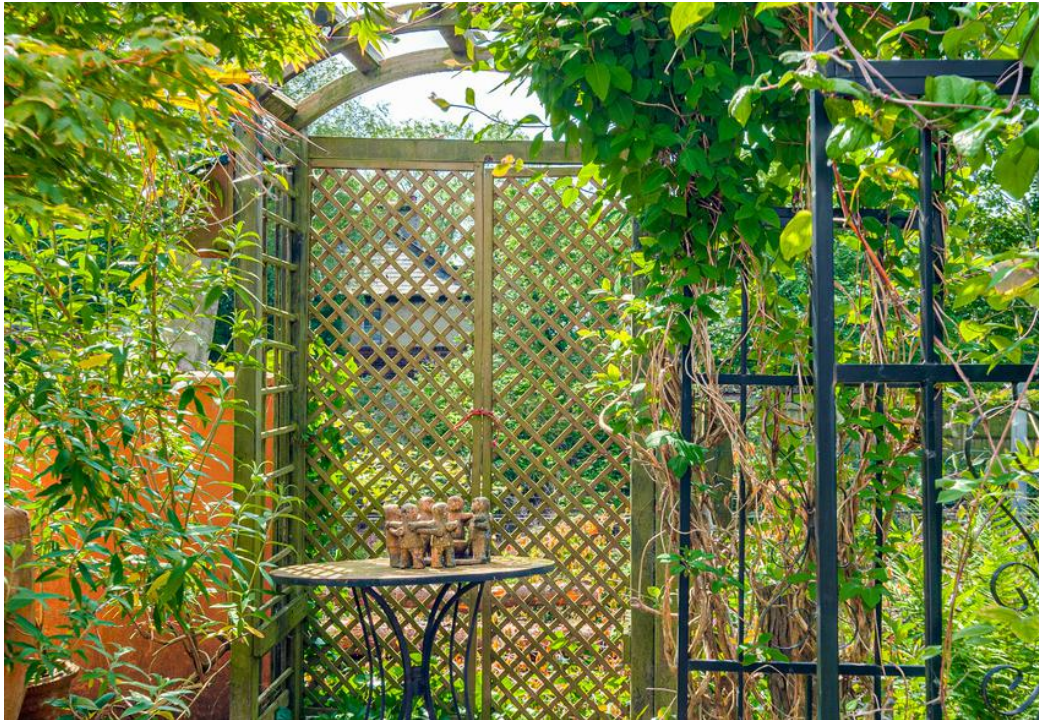
The exploration continues as you set your sights on the loft, a space brimming with untapped potential. Partially boarded and adorned with electric lighting, it offers a glimpse into the endless possibilities that await. With its expansive layout, the loft presents an opportunity to be transformed into two additional generously sized rooms, should the need arise.

















## FINER DETAILS...

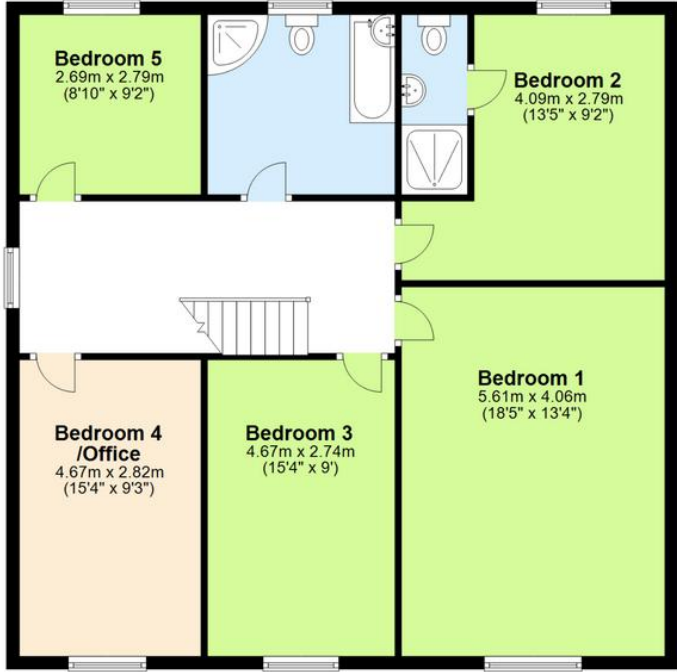
- Five bedroom detached home
- Green belt views to the front over open countryside
- Full Fibre broadband
- Electric front gates and garage door
- Parking for 4 vehicles
- Original features
- Built in the 19th Century as a hotel for the very first passenger railway
- Previously known as the Kenyon Junction Hotel





### GROUND FLOOR

Approx. 93.2 sq. metres (1002.7 sq. feet)



### FIRST FLOOR

Approx. 96.9 sq. metres (1042.6 sq. feet)





---

THE WHITE HOUSE

---

CULCHETH



1 WILTON LANE, CULCHETH, WARRINGTON, WA3

contact [tesh@hamletsignature.co.uk](mailto:tesh@hamletsignature.co.uk)

01925 235338

ESTATE AGENCY

HAMLET

*Signature*



Scan me to  
book a viewing